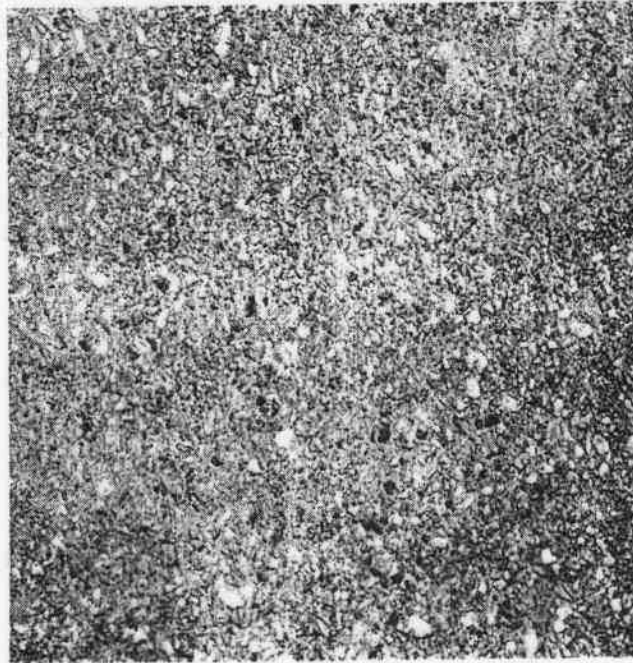
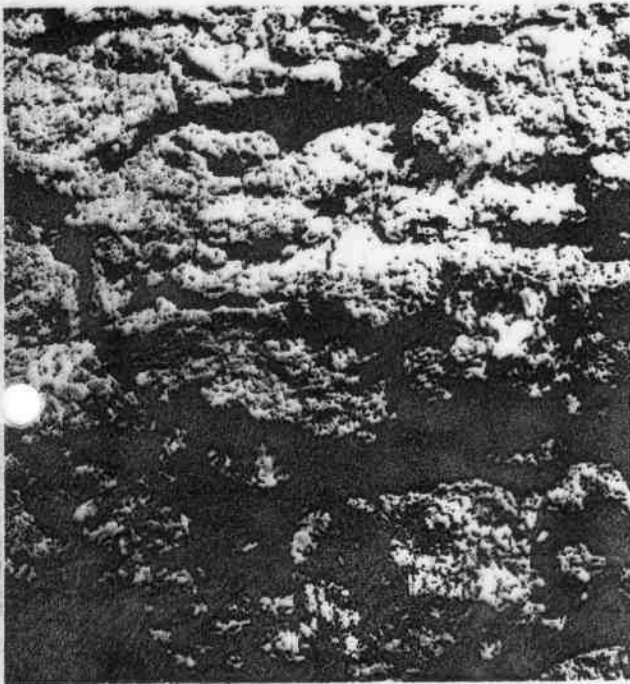


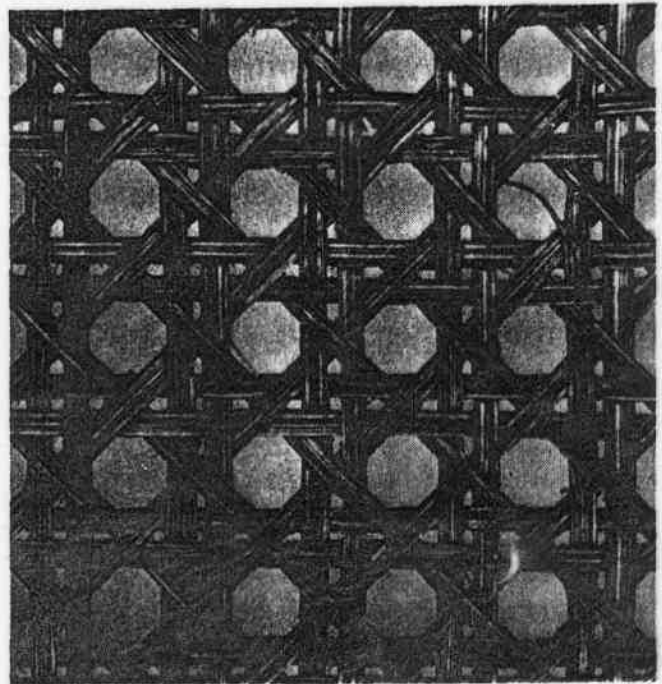
Beispiele für unterschiedliche Texturen



(a)



(b)



(c)

Figure 8.21 Examples of (a) smooth, (b) coarse, and (c) regular textures. (From Fu, Gonzalez, and Lee [1987].)

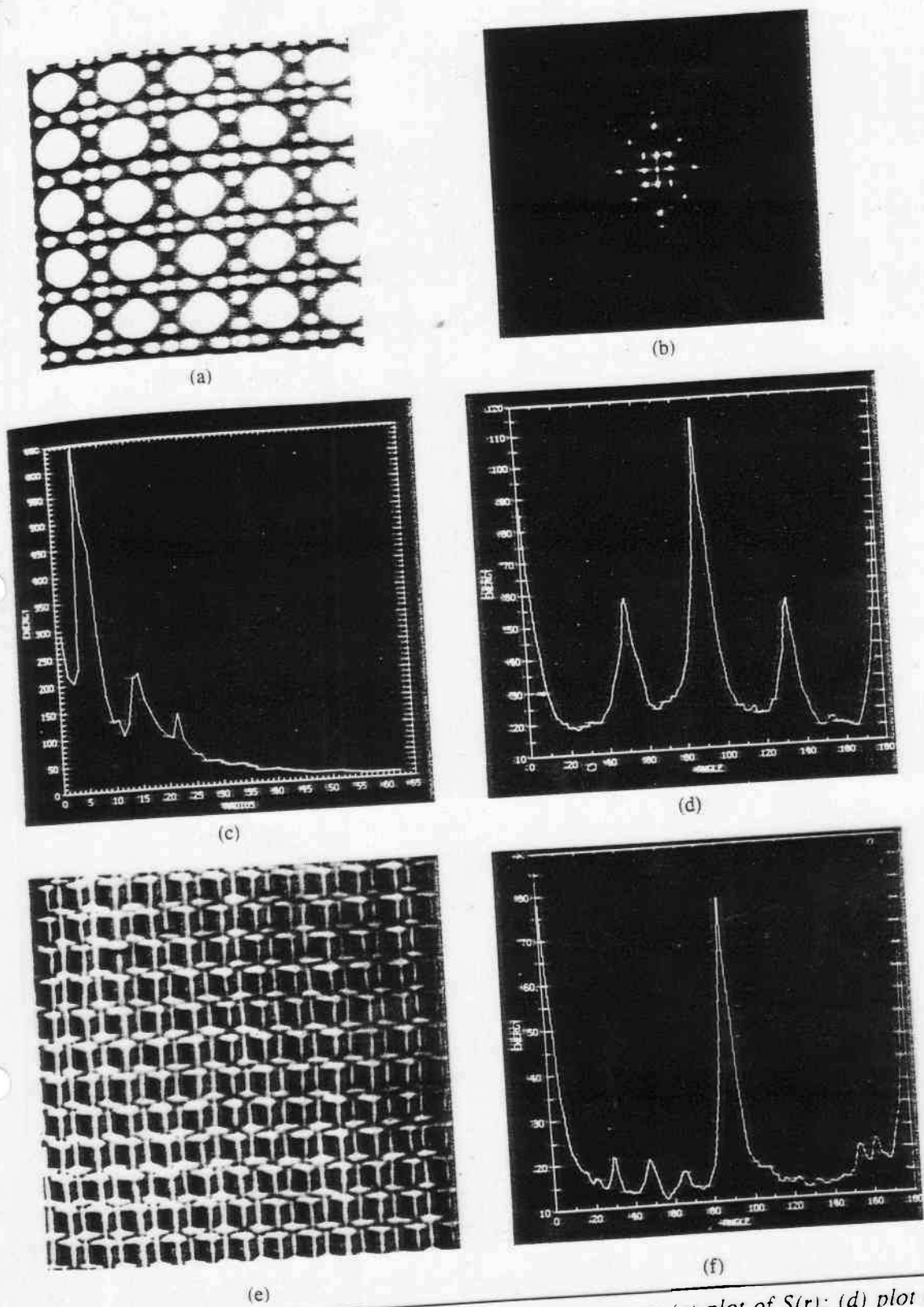


Figure 8.23 (a) Image showing periodic texture; (b) spectrum; (c) plot of $S(r)$; (d) plot of $S(\theta)$; (e) another image with a different type of periodic texture; (f) plot of $S(\theta)$. (Courtesy of D. Brzakovic, University of Tennessee.)

$$\begin{aligned} L3 &= [1 \quad 2 \quad 1] \\ E3 &= [-1 \quad 0 \quad 1] \\ S3 &= [-1 \quad 2 \quad -1] \end{aligned}$$

$$\begin{aligned} L5 &= [1 \quad 4 \quad 6 \quad 4 \quad 1] \\ E5 &= [-1 \quad -2 \quad 0 \quad 2 \quad 1] \\ S5 &= [-1 \quad 0 \quad 2 \quad 0 \quad -1] \\ W5 &= [-1 \quad 2 \quad 0 \quad -2 \quad 1] \\ R5 &= [1 \quad -4 \quad 6 \quad -4 \quad 1] \end{aligned}$$

$$\begin{aligned} L7 &= [1 \quad 6 \quad 15 \quad 20 \quad 15 \quad 6 \quad 1] \\ E7 &= [-1 \quad -4 \quad -5 \quad 0 \quad 5 \quad 4 \quad 1] \\ S7 &= [-1 \quad -2 \quad 1 \quad 4 \quad 1 \quad -2 \quad -1] \\ W7 &= [-1 \quad 0 \quad 3 \quad 0 \quad -3 \quad 0 \quad 1] \\ R7 &= [1 \quad -2 \quad -1 \quad 4 \quad -1 \quad -2 \quad 1] \\ O7 &= [-1 \quad 6 \quad -15 \quad 20 \quad -15 \quad 6 \quad -1] \end{aligned}$$

Figure 9.5 One-dimensional textural energy kernels. *L* stands for level, *E* for edge, *S* for shape, *W* for wave, *R* for ripple, and *O* for oscillation.